

2019-2020 DEMOGRAPHIC DATA



Fairness for All in Childhood Education



Three Educare schools, including a total of **six sites**, participated in year one of the Fairness for All in Childhood Education (FACE) study: **Denver, Omaha, and Tulsa.**



265 children

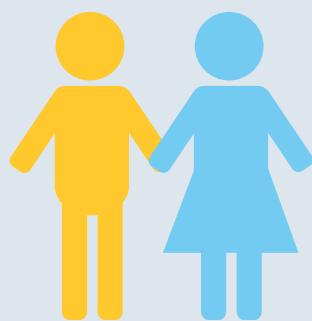
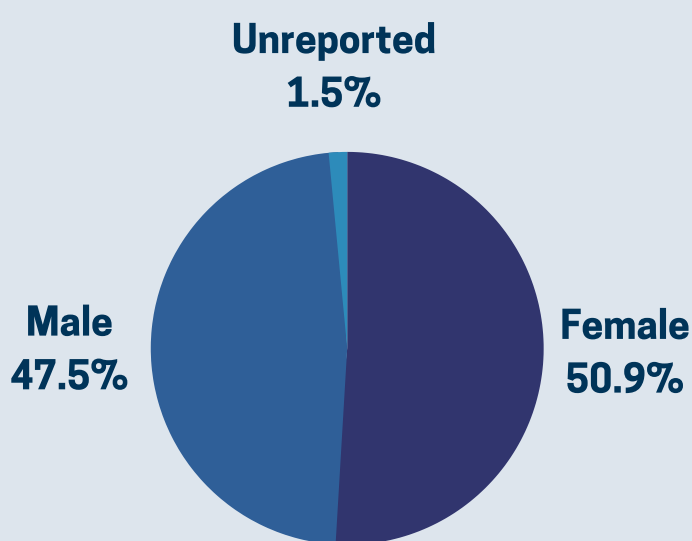


31 classrooms



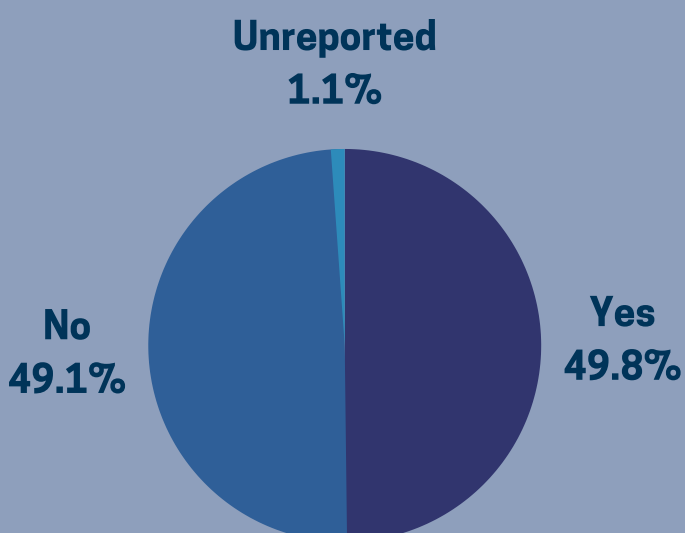
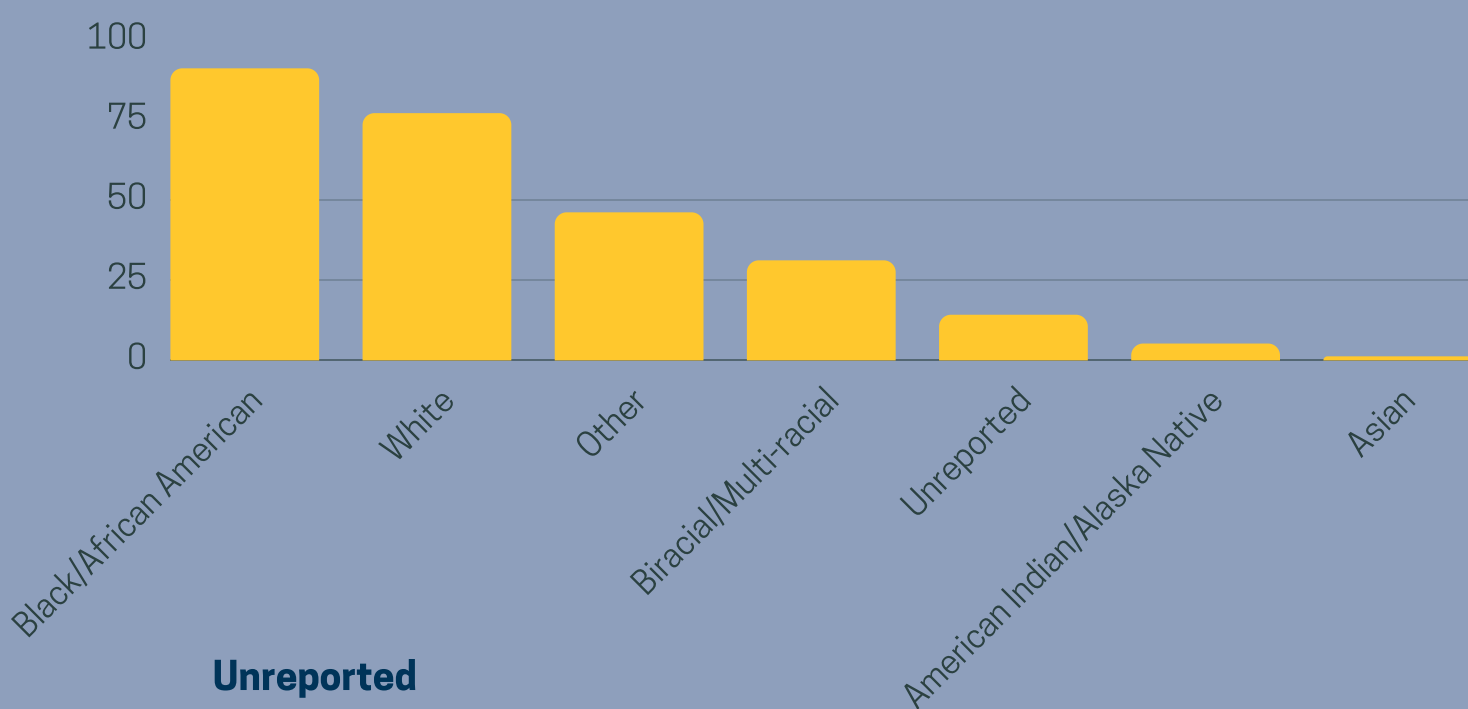
59 teachers

CHILD DEMOGRAPHICS



CHILD GENDER

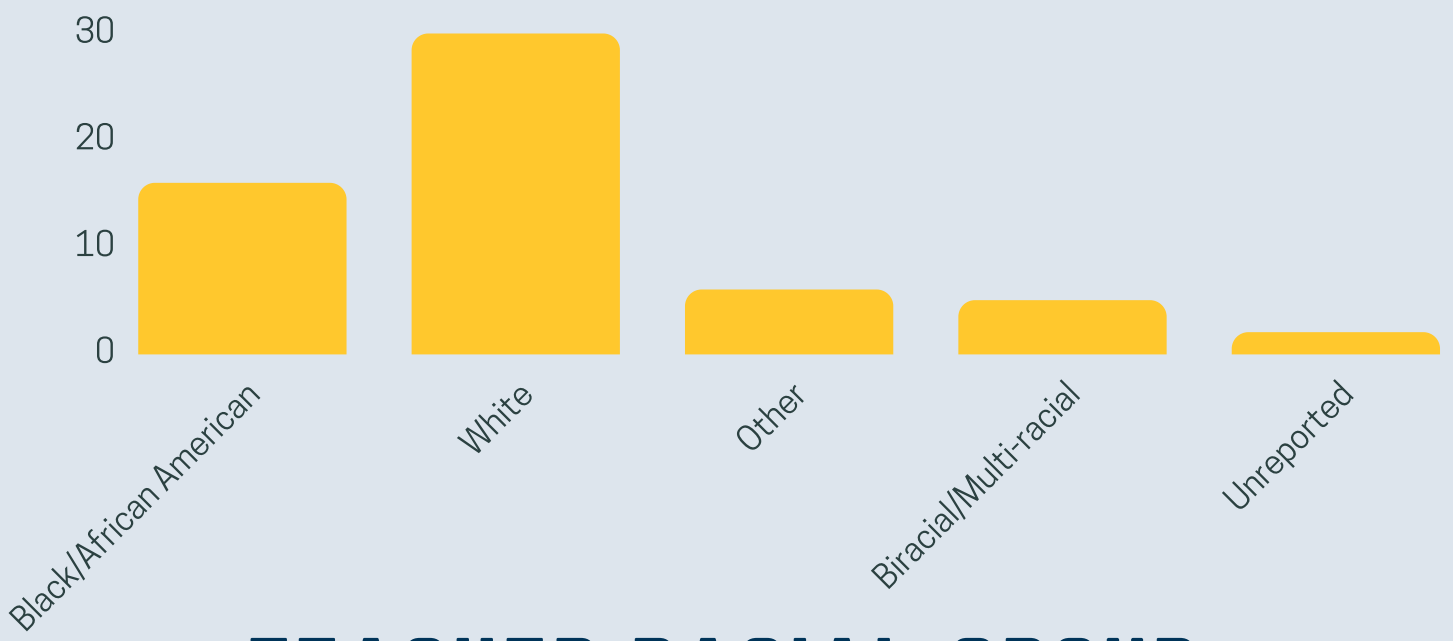
CHILD RACIAL GROUP



CHILD ETHNICITY

Children of Hispanic or Latino origin

TEACHER DEMOGRAPHICS

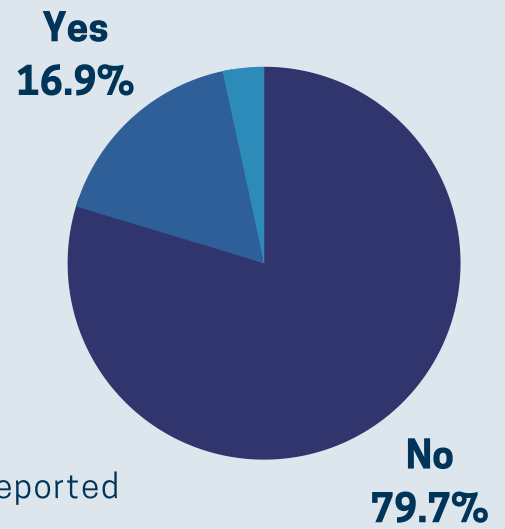


TEACHER RACIAL GROUP

TEACHER ETHNICITY

Teachers of Hispanic or Latino origin

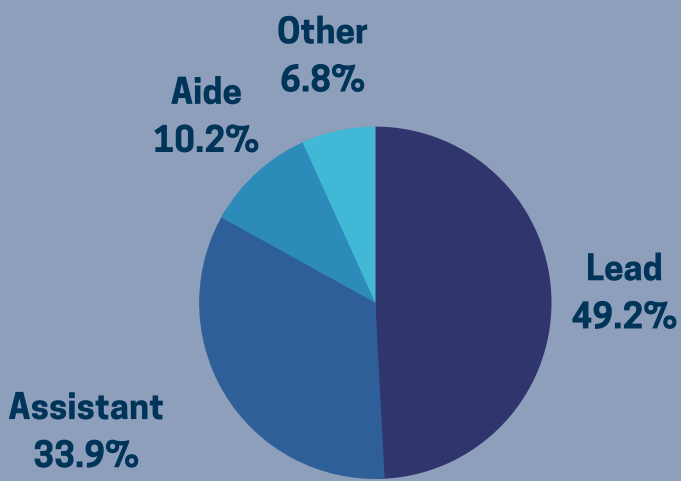
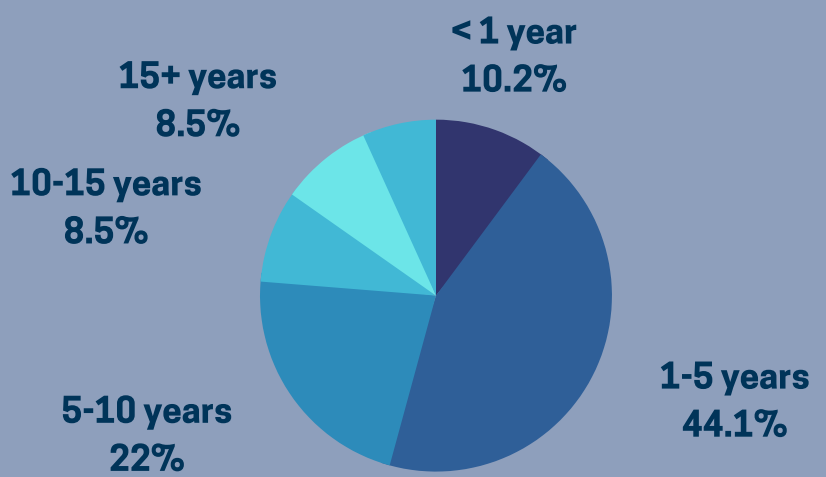
Note: 3.4% Unreported



TEACHER EMPLOYMENT

How long have teachers been employed at Educare?

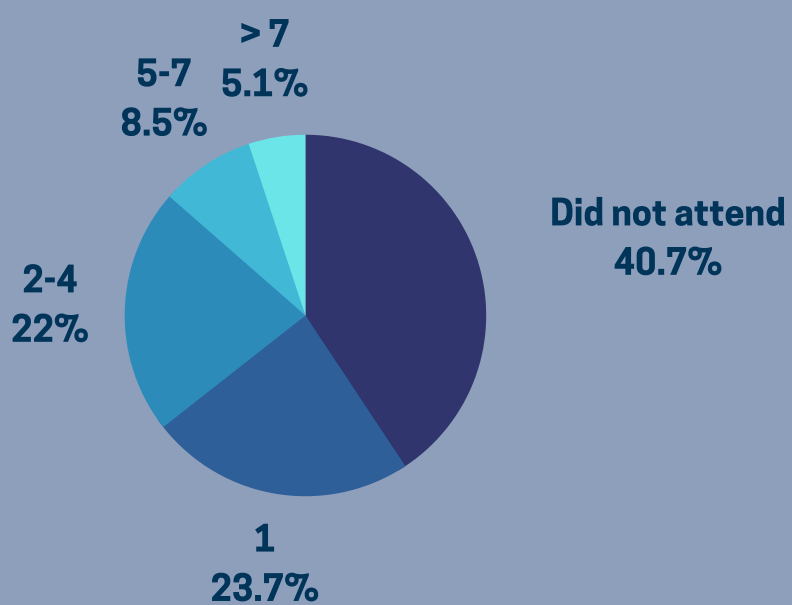
Note: 6.7% Unreported



TEACHER POSITION

TEACHER TRAINING

How many workshops did teachers attend on culturally responsive practices or pedagogy, racial equity, or anti-bias in the past 12 months?



2021-2022 SCHOOL YEAR

The project anticipates partnering with **six Educare schools** for year two of data collection: **Atlanta, Chicago, Miami, Milwaukee, New Orleans, and Washington D.C.**

